



Tasman Times

July 2017

Once again we have had a busy time in Tasman and Kina with plenty of issues to deal with.

We would love to have feedback from you in the community about our newsletter and would welcome any comments you might care to offer. Are we covering everything you feel is relevant?

Thanks to TDC for their help yet again with the production of our community newsletters.

David Short (E: iamdavidshort@gmail.com, T: 526 6877)

From The Chair

As this mid year newsletter is being compiled, I am writing this while on an extended stay in the UK and after the recent events over here with the Manchester bombing, Westminster Bridge event, the Grenfell tower block fire, the Finsbury Park event and of course Brexit, it makes me think of our wonderful Tasman district and how lucky we are to live in such a community that is not only safe and supportive but also politically stable.



As usual there is no shortage of news to report. We are making great progress with the new Kina Beach Walkway which will enable school children and locals to walk with a greater degree of safety than has been the case on a narrow, windy section of road. This is thanks to the good work of our newest committee member, Pippa Tristram and local contractors.

Our “new” playground in Tasman Reserve is slowly but surely taking shape with lots of new equipment for our kids to enjoy. Thank you to Paula Short for your perseverance.

We are now delighted to advise that we have joined the ranks of Facebook and have our own page. Read more on that later in the newsletter. We would urge you all to “like” our page and then

you can be kept informed of the latest goings-on in Tasman & Kina.

It has been an eventful few months at Tasman School as you will see, while significant progress is being made towards the Tasman Community Pool, which will one day soon become a great asset for the future.

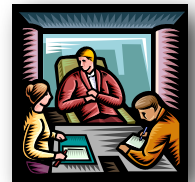
Finally our AGM is happening next month and we would love you to see you there. Typically we have a topical theme which will feature the sometimes contentious issue of freedom camping.

So here’s hoping the winter is not proving to be too cold for you all with those fine clear days we tend to expect.

David Short
Chairperson

Admin Stuff from the Secretary

After the Tasman District Council elections we welcomed Councillors Anne Turley, Dean McNamara (Waimea- Moutere Ward) and David Ogilvie (Motueka Ward) to our committee meetings. All three have attended our monthly meetings regularly and have been of assistance when for some reason we need to liaise with TDC staff.



Annual General Meeting

Our 2017 AGM will be held on Wednesday 26 July at the Community Hall Tasman School, commencing at 7.30pm followed by complementary tea, coffee and biscuits.

All residents are welcome. The topic of Freedom Camping is very much a topical issue at the moment. TDC is proposing a bylaw to restrict freedom camping in certain areas.

Adrian Humphries, Regulatory Services Manager, TDC will lead a brief discussion at our AGM, so please come along to have your say.

Local Reserves

Tasman Reserve

It's pleasing to see local children enjoying the new additions to the children's playground. Work on the playground is ongoing with a load of bark down and a couple of new play items being added recently. A telescope and binoculars has been added to the fort for older children, thanks to Tony Clark, and the steering wheel moved across to the big fort for the younger ones.



The new seesaw is still causing problems, having been installed at an incorrect height and with many complaints from parents of kids banging their faces on the handles. The TDC have now agreed to remove the seesaw and replace it with one that is safer, although we are not currently sure when this will happen.

At present we have a plan on the drawing board to install an informative montage of photographs depicting the history of the old ford that was situated in the reserve.

Mill Point site Recovery Project- Kina Beach Road

If we could look forward 50 years, what is now little more than a bush covered site of Ngaio, Manuka and Ake Ake, will display some towering trees of the forest – Totara, Miro (Brown Pine) and Matai (Black Pine) – all 40 or so now planted in the understory of the site. Whilst we will not live to see that good work, our grandchildren will perhaps appreciate the efforts that the small but dedicated team of volunteers accomplished on this former rubbish dump each month.

Gorse is now a rarity, Broome a little more of a nuisance but is under severe pressure from the



lopplers and spray pack and whilst Pampas seedlings still appear, they are quickly removed and as the site becomes cloaked in a native ground cover, it diminishes their capability to root.

Bird life is increasing and so unfortunately is the rabbit colony, but that's a problem to be addressed in the future – perhaps we need to recruit a volunteer with a Jack Russell terrier!

A good network of paths is developing – not yet in a formed gravel sense but giving a good access around the site. Morning tea and muffins are consumed at the picnic bench constructed and donated by Tony Clark of JointWorks in Tasman and whilst the plot is still technically a closed Engineering Site if you would like to have a look around, do feel free to come along and look – we meet usually on the first Saturday of each month between 9.30am and 11.30am – you won't get press-ganged into work and there might even be a cuppa and muffin spare! Further information from Tony Pearson 03 540 3217.

Kina Beach Reserve

Recently erosion caused by wave action has eliminated two to three metres of beach frontage. Posts have been installed to fence the foreshore and planting this area will hopefully commence shortly. The camping ground is quiet this time of the year and the resident caretakers Jenny and Pete are using this opportunity to spread metal on the footpaths and to fill potholes.



Kina Beach Walkway

TACA is building a walkway from the bridge over the Tasman Stream on Kina Road, to the junction with Kina Peninsula Road. It is not to build a cycleway, or council standard pathway, but to improve the existing shoulder, so that a basic and safer pathway is created for the community to use instead of walking on the road. It is expected it will be used as a shared pathway as bikes will also feel safer on the shoulder.



At the beginning of the year, we cleared and scraped back a pathway so that we could see what was required so that we could apply for funding.

We now have all the funding required!



With the help of some amazing letters of support from the community, a grant application was submitted to the Rata Foundation and they awarded us half of the money required to complete the walkway.

We then approached Tasman District Council with the same supporting letters from the community and they have agreed to meet any shortfall in funding. So with those two large sums of money, and donations of labour and equipment from local businesses, we are now able to proceed with the walkway.

Now we just need the contractors to have time and the weather to be kind!! The plan is to have it completed by the end of July 2017!!!!

To help keep the contractor bill down, we will require a few volunteers to help tidy up behind the compactor (it misses some bits) as it is important to get the surface fill in place before the first rainfall. If you wouldn't mind being contacted and asked to help when we do firm up the time, can you please email Pippa Tristram (bendigonz@xtra.co.nz).

Welcome Packs

Welcome packs containing vouchers, telephone books and local information are now being made available to newcomers to the Tasman area by the rural postal delivery agents for rural deliveries 1 and 2. If you are new to the area and haven't received a pack, speak to the rural post driver or call the secretary on 021 265 3153.

NEW ZEALAND'S
OLDEST
BUILDING SOCIETY

NBS
NELSON BUILDING SOCIETY



NBS TASMAN GOLF CLUB (Inc)

128 Cliff Road, Kina Beach

Ph 03 526 6819

Email: teeup@tasmangolfclub.co.nz

www.tasmangolfclub.co.nz

Our Concession books are 10 rounds of unlimited daily holes for \$150.

Membership options range from just \$70.
Children under 12 Free.

If you are unsure about playing golf, come along on a Friday morning and enjoy a social round with a fun group of both beginners and experienced golfers. Tee off 9.30am.

For more information
contact Claire at the Golf Club.

Jester House News



Ahhh..., winter. A time for warm fires, hot soup and a bit less of the hurly burly. Here at Jester House we like to also use the quieter months to give back to our community and to make ourselves better. Here is a bit of what we've been up to.

At the beginning of May was Mothers' Day. This year we thought that Mothers deserved more than a day, so we had Mothers week. All the Mothers who booked to come for lunch during the week were not only treated to a delicious meal on the day but they also went home with a voucher to return for a free meal. We made a lot of Mothers happy that week.

May also saw our annual Pink Ribbon Breakfast weekend. This is the major fund raising campaign of the Breast Cancer Research Foundation. It is a cause close to our hearts and one that we are proud to support. A pink themed menu was offered all weekend with a percentage of takings donated to the foundation. This year we raised over \$600.

June has been Environment Month at Jester House to coincide with Arbor Day and World Environment Day. Environmental care is one of the core values of the café and it has been great to be able to focus more attention on it. To help support the environment in our community we have been running a raffle all month to raise money for planting at the Tasman School. The money raised will be spent on seeds and seedlings, so the children can learn where food comes from and plantings to grow the schools play based learning environment - no wonder Jester House wanted to be involved.

Nic, our gardening expert, has also given tours of the property, so you have had the opportunity to see the behind the scenes sustainability and environmental practices we follow. Things like waste minimisation and separation, permaculture, composting, and natural buildings are all part of the greater Jester House picture.



This has also been a time for staff learning. This month we have focused on wine knowledge and we were thrilled to have Dave Birt (ex Kina Beach Vineyard and local wine guru) give us an evening to teach about wine flavours and food matching. Our hosts are now much more knowledgeable and able to help you with your wine choices.

Coming up from the 8th until 23rd of July we have our famous School Holiday activities. These are a much anticipated feature of the holidays for parents, grandparents and of course the children. These holidays we are having a "Jungle Safari" It's a good area to book a table and best of all it's FREE.



After the school holidays the café will be closed for our annual holiday from 24th July until 1st of September, opening again just in time for Fathers Day on 3rd of September.

Sorry Dads, you don't get a whole week as we'll be away, but make sure you don't miss out on the day by telling the kids all you want for Fathers' Day is lunch at Jester House and that they should book a table for you by phoning 03 526 6742 or online at www.jesterhouse.co.nz/menu

Enjoy the rest of the winter and remember, whatever the weather, you'll always get a warm welcome at Jester House.

All the best, Judy, Steve and team.

Tel: 03 526 6742

Email: lunch@jesterhouse.co.nz

Web: www.jesterhouse.co.nz

TACA joins facebook

TACA now has a facebook presence. You can find us by simply searching for Tasman Area Community Association in facebook's search box or using www.facebook.com/Tasmanareacommunityassociation. We are just new at this but we are endeavouring to use the page to keep our community up to date with TACA projects, such as the Kina Beach Walkway, TACA meeting dates and other important local events and information.

The General Tasman Store News

It's been a whirlwind couple of months settling into a new business venture, but a huge thank you to everyone who has supported us in getting established and the warm welcomes into the Tasman community.



You may have noticed a few wee changes in layout if you have popped in lately; we are still stocking all of the same things, just in different places. Do come in and give us feedback at any time. We do want to stock the things that make it easier for you.

Hard to believe that the winter is set in. I had forgotten how mild the Nelson winters are. I guess one can be fooled when so many people are still eating real fruit ice-creams! And it is nice to be back home and enjoying the lifestyle that comes with that, time with family and old friends. We look forward to seeing you for a warm drink over the winter months.

Becs and Sonny

www.facebook.com/tasmangeneralstore

Anzac Day citizens' memorial service

As has become a Tasman tradition, Anzac Day was once again commemorated this year by a well-attended citizen's memorial service. Residents, friends and families of the local community congregated in front of the war memorial at Tasman School in homage to the fallen. In the warmth of the autumn morning sun, both the Australian and New Zealand anthems were sung as tribute to the enduring bond shared by both nations.

The Lord's Prayer and gospel reading were led by retired air force padre, Trevor Squires and poems, including John McCrae's In Flanders Field were read by Tasman school students. Richard Easton, who directed proceedings, introduced Denise Puha representing Motueka Cadets, conspicuous by their absence this year, being part of ANZAC commemorations for the Maori King on Tūrangawaewae marae in the town of Ngaruawahia.

After a minute of silent remembrance the flag was lowered to a stirring bugle rendition of The Last Post, followed by the Ode's affirmation of remembrance before the flag and attendee's spirits were raised during the Reveille.

The RSA led the laying of several wreaths and the community were invited to lay their poppies on the memorial as a lone piper played the solemn lament, Flowers of the Forest. Afterwards attendees were invited to catch up with friends and comrades during morning tea in the community hall which was kindly supplied by the RSA.



The last twelve months has been an exciting period for our school in terms of growth and milestones. For the first time ever our school exceeded 100 students, and we finished the 2016 school year with 102 students. This jump in numbers has seen our school open a new classroom space. We now have five classrooms. Cosmetic work in the form of painting has occurred across the senior school to brighten and enliven learning spaces and the school is in a phase of replacing student furniture across the school.

This year we have welcomed Josie Orr (Room 4) and Maia Campbell (Room 3) to our teaching team. Our school opted to join the newly formed Motueka Community of Learning (CoL). The vision of the CoL is to increase student opportunities and success across the Motueka District to create a stronger sense of community. A smaller group of schools from the Motueka Community of Learning applied for Ministry of Education professional development through the curriculum umbrella of science. Tasman School was part of this application and it was approved for 2017 with a professional development plan initiated during the summer break. This plan has already started with our teachers and the improved science learning is beginning to filter through the school.

The school has continued to maintain its involvement in a range of in-school and district wide events that help to ensure its students have a range of rich experiences:



- Our students have been exposed to a range of outdoor education based activities in the form of 'Adventures Clubs', a ski trip, a new outdoor winter camp at Lake Rotoiti and a Year 8 expedition in the form of a mountain biking expedition on the Queen Charlotte Track based at Mistletoe Bay. Our current Year 8 students

recently travelled to Hanmer Springs and Christchurch for their leadership expedition, which included a session at the Young Leader's Day. Our senior outdoor education camp will be at Marahau this year.



- Our students have recently participated in local cross country events. Particular mention must be made of Lara van Veen who gained 1st place in the Year 7 Girls' race, Zefa Fa'avae who gained 2nd place in the Year 7 Boy's race and Jerry Rush who gained 2nd place in the Year 5 Boys' race at the Motueka District Primary Schools' event.
- Our students are preparing for the upcoming Matariki celebrations on Friday 30th June at the Rush's apple shed.

The school is fortunate to have a dedicated fundraising team who, along with the two major fundraising events, have initiated smaller fundraising ventures to build a solid buffer of funds each year. The Muddy Buddy Adventure Run was held in early April and approximately \$16,000 was raised after expenses. A number of smaller events are planned with the key focus to raise funds for a new community pool.

The vision of a new community pool has developed a great deal of momentum. A pool committee was established (Anna Weeks, Hamish Lindsay, Jodie Fa'avae and Nick Bowmast) and a combined total of approximately \$85,000 was raised by the end of 2016. Additional funds raised and donated this year bring the locally raised funds total to \$106,000. Last week we received the news of a successful Lotteries Grant application. We have been granted a figure of \$126,000 for the project. This raises our total to \$232,000.

Last week we celebrated our annual Book Week. We received visits from Jerri Pirc and Jane Smith, the author and illustrator of the Kate and Caboodle series of stories. Nathan Fa'avae also

shared his tales of creating an autobiography with our senior students. Our week finished with a book character dress up day and the theme was 'adventure'.



Moving forward during 2017 Tasman School hopes to achieve these goals:

- Improve and consolidate teacher and student understanding of Te Reo and tikanga across the school.
- Raise writing achievement to 85% at or above National Standard. Our reading and mathematics sits at approximately 90% at or above National Standard.
- Explore opportunities and manipulate the current physical spaces to embed Innovative Learning Environments and practice within the school.
- Develop an outdoor play based learning space for our junior classroom.
- Improve the profile of science in the school through the provision of MoE funded professional development. This will be delivered with a smaller cluster of schools from the Motueka Community of Learning.
- Implement plans for the community pool project when additional funds are raised or granted.

Consistent house sales and planned developments in our school zone are providing steady numbers. This combined with our strong parent community and vision for physical spaces provide a bright future for our school.



Tasman School Community Pool

The Tasman Community Pool Committee were very excited to have been awarded a grant from the Lotteries Commission in mid-June, to enable us to build our new swimming pool! The proposed 25x6m pool will be on Tasman School grounds and will be a fantastic facility for both children and adults alike.

Whilst we have secured funding for the pool, we still need to fundraise to enable us to build a toilet and changing room. Help will also be needed to landscape around the pool area and build seating on completion of the pool. We have already received some very generous donations from within the community but any further support will help us reach our goal of having the pool completed within a year.

If you can help in any way with donations, fundraising or have any ideas please email tasmancommunitypool@gmail.com

Thanks for all your support,
Anna, Hamish, Jodie & Nick

Around the Village

The Community Service Team have been busy in the Tasman Domain keeping the grass short around the plants in the 'Spinney', to the left of the underpass. It is great to see that they have also kept the two berms between the playground and the sculpture tidy too.



The Vet Centre

Mapua Clinic 5402329
Motueka Clinic 5288459
Richmond Clinic 5445566

www.vetcentre.net.nz

"Personal Care for All Animals"

NZVA Best Practice Accredited
(Tasman's only accredited Practice)

Vet's Voice

It's that time of year that chills to the bone! Unfortunately our pets can suffer as we do from the chill especially if they have arthritis. Arthritis is a degenerative condition that affects one or more joints, with the resulting pain from inflammation progressing over time if left untreated, causing the condition to get worse. It can result in changes to the cartilage, fluid, bones and capsule of the joint.



Arthritis (osteoarthritis) is a painful and debilitating condition affecting 1 in 5 dogs, over the age of one. Arthritis doesn't discriminate - it affects cats and dogs of all ages. If you notice any changes in your pet's mood and level of activity, it may be due to the pain of arthritis, one of the most common chronic conditions which veterinarians treat.

There are many things that can cause arthritis in dogs and cats such as:

- Traumatic injuries that result in joint instability
- Obesity - being overweight increases the forces acting on the joint
- Genetically weakened or unstable joints e.g. hip dysplasia
- Failure of proper bone development in the young

While no cure exists for arthritis, there are pain management options available for your pet, which will greatly reduce the impact of the condition and increase their quality of life. There are also diets available, such as Hills J/D, which help to decrease inflammation in the joint space and encourage a more comfortable lifestyle for your pet. This diet has provided outstanding results in the comfort of pets, be them dog or cat. Using comfortable bedding and putting a coat on your dog when they have to go outside can help limit painful joints, getting cold or having too much pressure on them. Using heating solutions also help, like the

microwavable heat pad, SnuggleSafe, lasting 10 hours, available in clinic.

For more information on how to help your pet through arthritic management or if you think your pet could be affected call the team at The Vet Centre today on 03 528 8459 (Motueka) or 03 544 5566 (Richmond).

The Big Beach Clean-up 2017

Our community in Tasman & Kina seems to have a very strong environmental sense of responsibility. When volunteers were asked to donate a few hours of their time in early March to the region-wide Big Beach Clean-up campaign, once again driven by the Department of Conservation, there was no shortage of enthusiasm.

Groups are required to make choices of their desired clean-up location. We were fortunate to once again be given the Coastal Highway from end of Aporo Road through to the northern end of Strong Loop.

Despite the fact that our former Secretary, Tony Pearson, has moved to Mapua, he was certainly instrumental in assisting with the efficient organisation of the event. A short safety briefing from Tony and by 9.30am the crew was fossicking for discarded rubbish along the Highway.

As per the previous Big Beach Clean-up we had completed our section by late morning and with two full ute and trailer loads it was off to the DOC office in Motueka to deliver our payload to the waiting compactor.

Once again many thanks to the volunteers who helped with a very successful event.

We look forward to enjoying the same level of support when the next Big Beach Clean-up takes place in the future.



Tasman Bible Church – Nov 2016

More than Just a Close Shave

Richard Hammond of *Top Gear* fame has just cheated death – again! Quite rightly, he apologised to his wife and family for putting them through the trauma. Pushing the limits of a fast car in Switzerland was apparently too much of a temptation and the result was a close encounter of the unintended kind.

What does it mean to ‘cheat death’ and what is a genuine ‘accident’? Having been through one recently – involving the ‘kick-back’ of a chainsaw - it certainly concentrated my mind given the potential loss of sight and/or life! Having also worked for some time in an insurance claims department, the notion of an ‘accident’ was and is now obsolete, undesirable, or even plain wrong. Someone has to be the *cause* and thus, wear the blame. Hyper-litigious cultures make accountability the prime focus of an ‘accident’ - even eclipsing the tragic or fatal consequences.

If you believe in random chance, blame cannot be an issue. Culpability, for a vague and generally non-defined universe or pluriverse means ‘it’ was just dealing out a particular hand. It – good or bad - was just written in the interconnected stars. Even ‘lady-luck’ (whoever she is), or ‘mother-nature’ (again, who is this?) may retain her amoral status whatever happens. Random-ness logically leaves no culpability - anywhere.

If you are a theist then the *kind* of god/God you believe in becomes important in the life (or death) equation. A small deity with limited powers could possibly be forgiven for not quite being in control of *the* (or your) world/universe but, what about an omnipotent and omnibenevolent One?


Christians tend to think and speak of God ‘allowing’ certain things to happen - not in an undefined or negligent way. Such a view invites *purpose* and *hope* into the whole gamut of things. It also, even after reflection and the gift of hindsight, leaves some unanswered questions.

Despite that, the key questions and the overwhelming testimony of Christians is finding faith *and* strength in the God they worship - particularly in the midst of tragedy and great suffering. The rather messy and accident-prone world in which we live does yield more than just a ‘close shave’ with death. Why so? Because, as the apostle Paul writes, “*And we know that in all things God works for the good of those who love him, who have been called according to his purpose*”.

This is no blasé or incoherent platitude; it is a statement of deliberate, thought-through, and committed faith – whatever happens.

Richard Drury

Check out www.tasmanbiblechurch.org.nz




Tasman Bay Christian School

Have you thought about Christian Education for your child?
Contact Tasman Bay Christian School

Principal: Steve Matthews

email: office@tasbaychristian.school.nz 6 Williams Road, RD1 Upper Moutere
Phone: 5266855 / Fax: 5266895 Website: www.tasbaychristian.school.nz



Baigent Reserve, Kina Peninsula



Another year has passed and Baigent Reserve continues its development into one of this district’s key coastal access points. The trees that have been planted in the past two years have done well and the continued weed management is really starting to make a difference.

Thanks to TDC for the support they have given us over the past year, which has allowed us to install the shade sail and BBQ area, plus the very clean and tidy full access toilet.



This year’s working bee will be held on **Sunday 6th August 9am till 12**. The plan is to spend time weeding out pest plants, planting and having a discussion about the future for the reserve. Possible ideas include forming a friends of Baigents action group, starting a rodent trapping programme to increase native bird activity.

Anyone interested please bring your ideas, tools, gloves and smoko to this great little reserve in our back yard on the day or call Hamish Rush on 03 526 6125.

Ruby Coast Gateway Sculptures Project update

You may have noticed a considerable amount of bark has been laid around the planted area near the sculpture. This was achieved by a merry gang of volunteers with the help and enthusiastic advice of TDC's Richard Hilton.



Since the foundation was installed for the Mapua Sculpture by Mapua Drive in December, the Ruby Coast Initiative Trust has been successful in being awarded two grants of \$18,000+ and \$5000 from the RATA Foundation and Mainland Foundation respectively. That, combined with a number of other generous local donations, including \$5000 from the Coastal News, has allowed the Trust to begin construction of the frame which will carry the sculpture.



As many of you will have noticed the promotional sign has been steadily getting closer to the target but the Trust is still in need of donations. If you feel inclined to make a donation, please go to www.rcit.co.nz/donating.

Tasman Area Community Association

Support your Association to continue their work. TACA was set up in 1989 with the purpose of "Protecting and enhancing the well-being of the residents and the natural resources of this area".

These people have the best interests of the community at heart and meet on a regular basis to discuss local issues & arrange community events.

Everyone is welcome to attend any meeting.

The "Who's Who" in 2017 at TACA

David Short	Chairperson	526 6877
Tony Clark	Acting Chair	526 6171
Brian Hanlon	Secretary	03 970 0565
Greg Dryden	Treasurer	526 6151
Hamish Rush		526 6125
Steve Richards		526 6742
Tracey Evans		526 6802
Roger Percivall		526 6230
Paula Short		526 6789
Pippa Tristram		526 6109

Next TACA meeting:

Annual General Meeting
Tasman School Hall
Wednesday 26 July @ 7.30pm

Membership 2017/18

The association is a voluntary group, which relies on annual membership subscriptions, sponsorship and grant applications to carry out the work they do.

Membership is \$5.00 per family or \$2.00 an individual. To join please complete the section below and post it to Greg Dryden, 14c Kina Beach Rd, Tasman 7173 or drop it with your donation to the Tasman Store or by internet banking. Subs for 2017/18 are now due.

Name.....

Address.....

Phone.....

Email.....

Amount enclosed \$.....

Receipt needed (circle) Yes No

For direct credit online, please pay to Tasman Area Community Assoc., Westpac, Motueka Branch Account No. **03 0693 0141622 00** & include your name and initials as per the sample bank statement box below.

Statement Details	
<p><small>Details to appear on your statement ²</small></p> <p><small>I have texted help you identify what the payments is to</small></p>	<p><small>Details to appear on recipient's statement ²</small></p>
Particulars	Particulars
Code	Code
Reference	Reference
<input type="text"/>	<input type="text"/>
<input type="text" value="TACA"/>	<input type="text" value="TACA"/>
<input type="text" value="Annual Sub"/>	<input type="text" value="Annual Sub"/>